

Henrique Oswald (1852–1931)

Elegia

HO00170

Dedicatória: Alla memoria dell'amico Enrico Mariotti

Editoração: Thiago Rocha

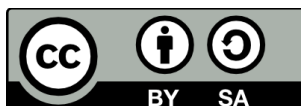
Instituição: Biblioteca da Escola de Comunicação e Artes
(Universidade de São Paulo)

violoncelo, piano
(*cello, piano*)

Parte:

[Violoncelo – p.7](#)

8 p.



MUSICA BRASILIS

Alla memoria dell'amico Enrico Mariotti

Elegia

HO00170

Henrique Oswald

Violoncello

Piano

p

cresc.

pp

5

dim.

p

9

mf

cresc.

f

rit.

espressivo

f

14

dim. p f

dim. p cresc.

18

cresc. ff

f

22

poco rall. *a tempo*

p cresc.

pp cresc.

27

f

f

32

ff *mf*

36

cresc. molto animando *ff* *rall.*

40

a tempo *ppp* *cresc.*

45

f *sempre* *cresc.* *molto*

49

ff

53

fff *dim.* *p*

8^{va}

57

pp *dim.* *p* *rall.*

8^{va}

61

1° tempo

pp *cresc.*

66

dim. p f

pp cresc.

This system contains measures 66 to 70. The bass clef part begins with a *dim.* marking, followed by a *p* dynamic and a *f* dynamic. The piano part features a *pp* dynamic and a *cresc.* marking. The key signature is three sharps (F#, C#, G#).

71

dim. f

This system contains measures 71 to 74. The bass clef part has a *dim.* marking. The piano part has a *f* dynamic. The key signature is three sharps (F#, C#, G#).

75

poco rit.

p

This system contains measures 75 to 78. The tempo marking is *poco rit.* The piano part has a *p* dynamic. The key signature is three sharps (F#, C#, G#).

79

rit.

pp ppp

pp

This system contains measures 79 to 82. The tempo marking is *rit.* The bass clef part has *pp* and *ppp* dynamics. The piano part has a *pp* dynamic. The key signature is three sharps (F#, C#, G#).

Elegia

HO00170

Henrique Oswald



p

cresc.



dim.

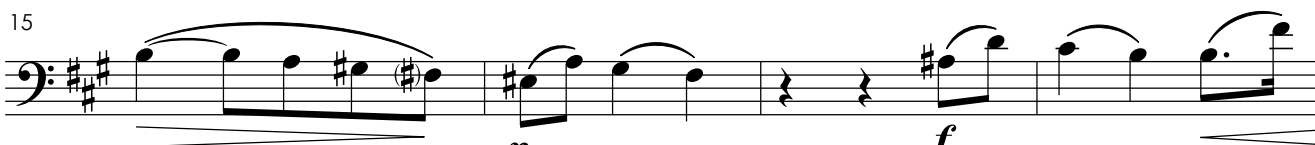
mf



rit.

f

dim.



p

f



< cresc.

ff

poco rall.

a tempo

p



cresc.

f



ff

mf

36 *rall.*
cresc. molto animando *ff*

40 *a tempo*
ppp *cresc.*

46 *f* *sempre cresc. molto*

51 *ff* *fff* *dim. p*

58 *1° tempo*
pp

65 *cresc.* *dim.* *p* *f*

71 *dim.*

75 *poco rit.* *rit.*
pp

80 *ppp*