

# Sinhô (1888-1930)

Burro de carga

Samba

Editoração: Thiago Rocha

orquestra de câmara  
(*chamber orchestra*)

Partes:

[Flauta – p.7](#)

[Clarinete em Bb – p.8](#)

[Saxofone em Eb – p.9](#)

[Trompa em Bb – p.10](#)

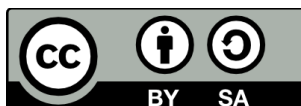
[Violino I – p.11](#)

[Violino II – p.12](#)

[Violoncelo – p.13](#)

[Contrabaixo – p.14](#)

14 p.



MUSICA BRASILIS

# Burro de carga

Samba

Sinhô

Flauta

Clarinete em B $\flat$

Saxofone em E $\flat$

Trompa em B $\flat$

Violino I

Violino II

Violoncelo

Contrabaixo

Fine

5

Fl.

Cl. Bb

Sx. Eb

Tpa. Bb

Vln. I

Vln. II

Vc.

Cb.

9

Fl.

Cl. B $\flat$

Sx. E $\flat$

Tpa. B $\flat$

Vln. I

Vln. II

Vc.

Cb.

13

1.

Fl.

Cl. B $\flat$

Sx. E $\flat$

Tpa. B $\flat$

Vln. I

Vln. II

Vc.

Cb.

Musical score for 'Burro de carga – Sinhô', page 5. The score is for a woodwind and string ensemble. It features parts for Flute (Fl.), Clarinet in B-flat (Cl. B $\flat$ ), Saxophone in E-flat (Sx. E $\flat$ ), Trumpet in B-flat (Tpa. B $\flat$ ), Violin I (Vln. I), Violin II (Vln. II), Viola (Vc.), and Cello (Cb.). The music is in a key signature of three flats (B-flat major or D-flat minor) and a 2/4 time signature. The score begins at measure 17, marked with a first ending bracket and a '2.' indicating a second ending. The woodwinds and strings play a rhythmic melody with various articulations and dynamics. The Flute and Clarinet parts have a melodic line with a second ending. The Saxophone, Trumpet, Violin I, and Violin II parts provide harmonic support. The Viola and Cello parts play a bass line with a prominent bass note in the final measure.

22

1. 2. **D.C. al Fine**

Fl.

Cl. B $\flat$

Sx. E $\flat$

Tpa. B $\flat$

Vln. I

Vln. II

Vc.

Cb.

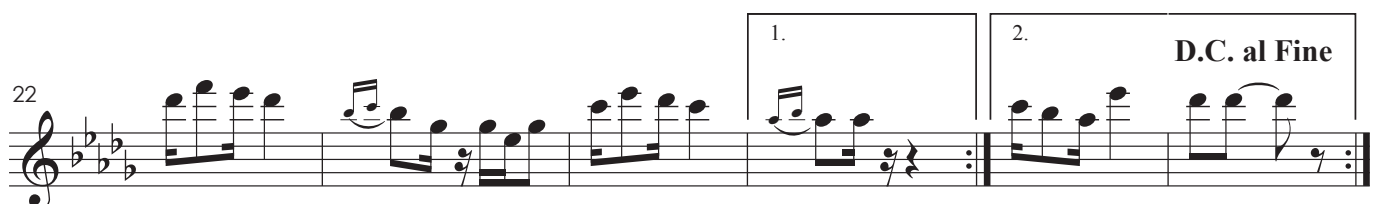
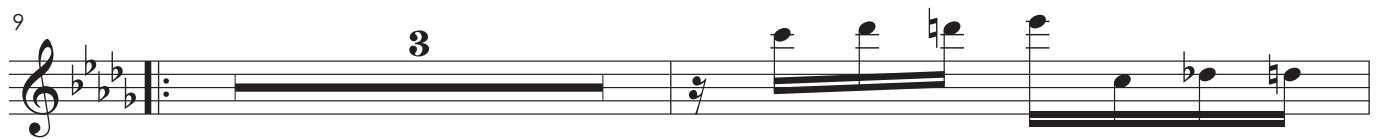
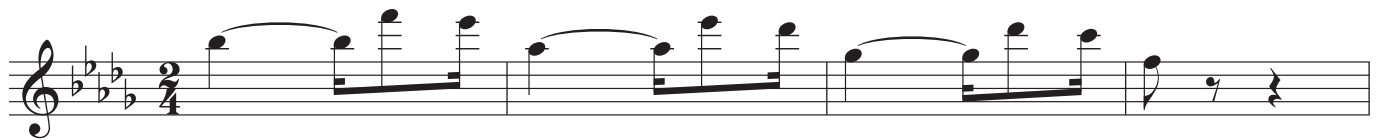
Detailed description: This is a page of a musical score for the piece 'Burro de carga – Sinhô'. The page is numbered 22. It features eight staves for different instruments: Flute (Fl.), Clarinet in B-flat (Cl. B $\flat$ ), Saxophone in E-flat (Sx. E $\flat$ ), Trompa in B-flat (Tpa. B $\flat$ ), Violin I (Vln. I), Violin II (Vln. II), Violoncello (Vc.), and Contrabaixo (Cb.). The music is written in a key signature of three flats (B-flat, E-flat, A-flat) and a common time signature. The score is divided into two measures by a double bar line. Above the first measure, there is a box containing the number '1.', and above the second measure, there is a box containing the number '2.' followed by the instruction 'D.C. al Fine'. The Flute part has a melodic line with some grace notes. The Clarinet and Saxophone parts have rhythmic patterns. The Trompa part has a steady eighth-note accompaniment. The Violin I and II parts have melodic lines with some grace notes. The Violoncello part has a rhythmic pattern. The Contrabaixo part has a simple bass line.

# Burro de carga

Samba

Flauta

Sinhô



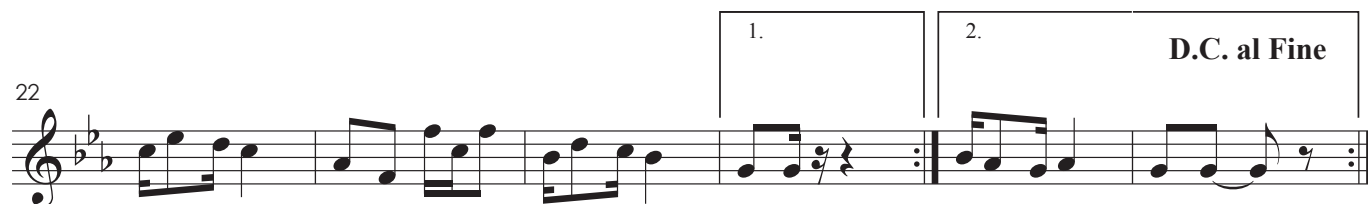


# Burro de carga

Samba

Clarinete em Bb

Sinhô

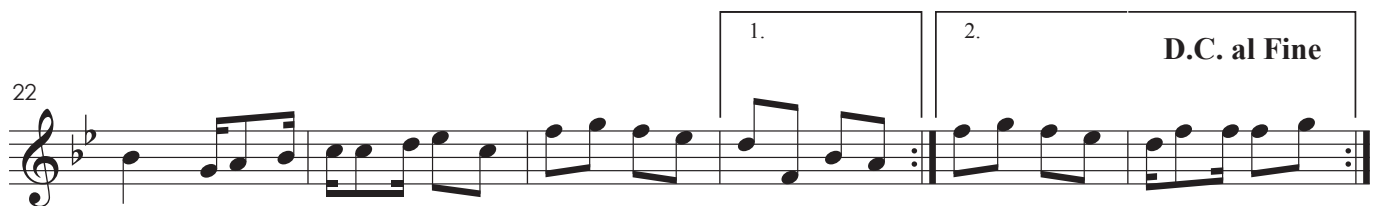
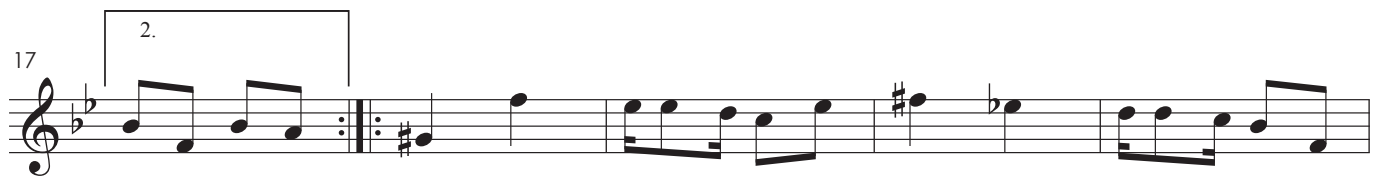
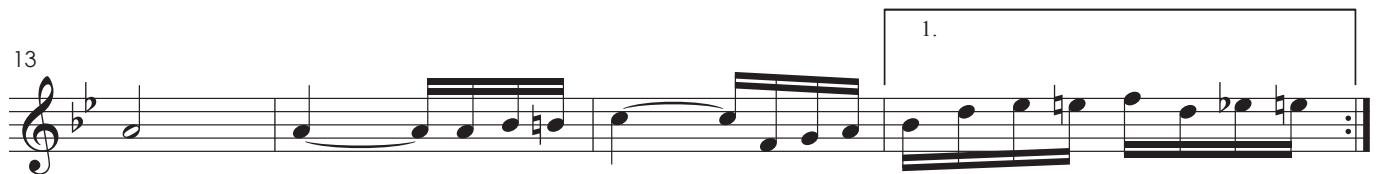


# Burro de carga

Samba

Saxofone em Eb

Sinhô

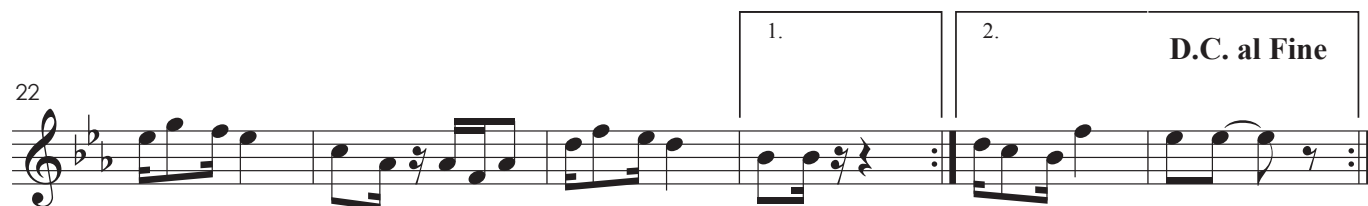
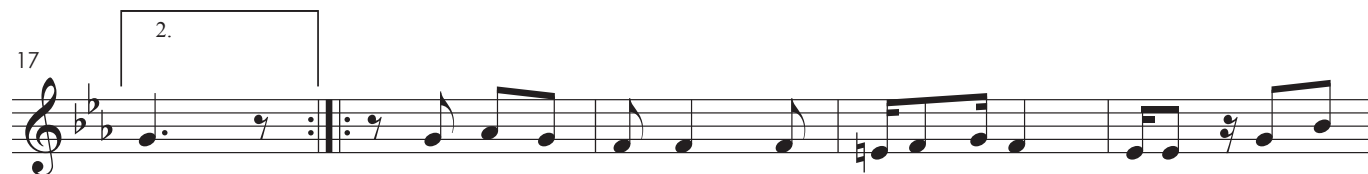
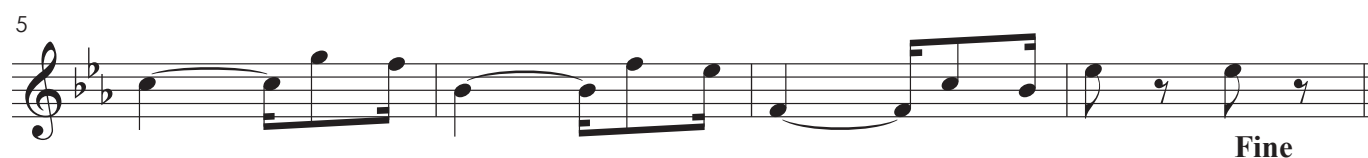


# Burro de carga

Samba

Trompa em Bb

Sinhô



# Burro de carga

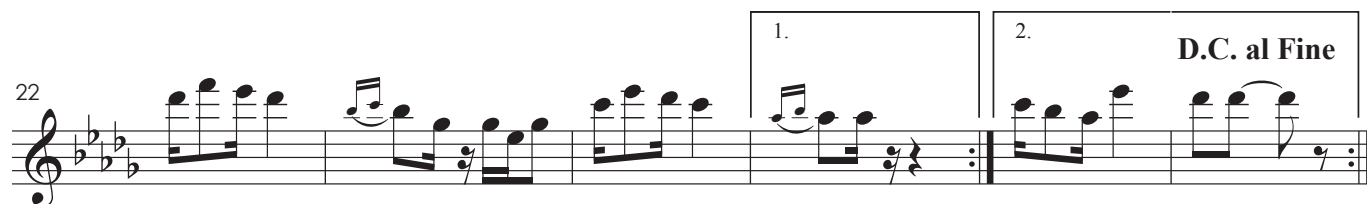
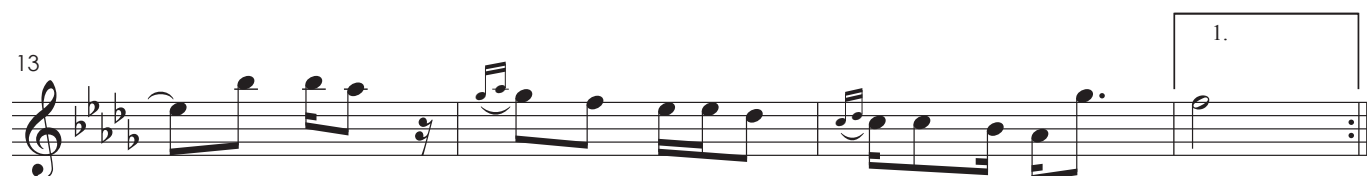
Samba

Violino I

Sinhô



Fine

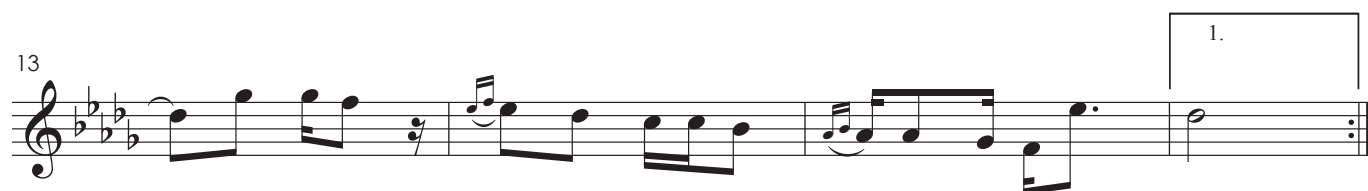


# Burro de carga

Samba

Violino II

Sinhô

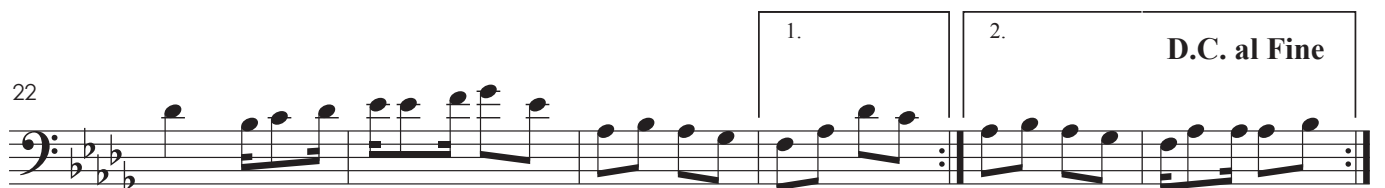
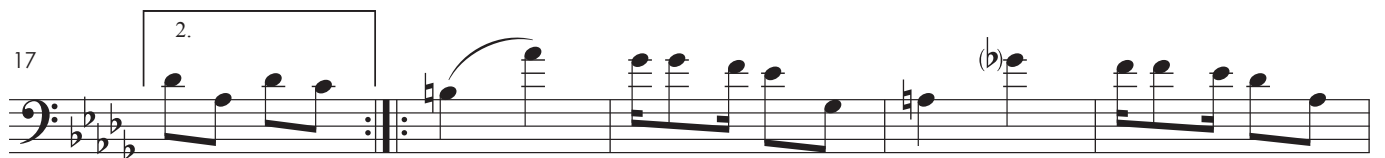


# Burro de carga

Samba

Violoncelo

Sinhô



# Burro de carga

Samba

Contrabaixo

Sinhô



5

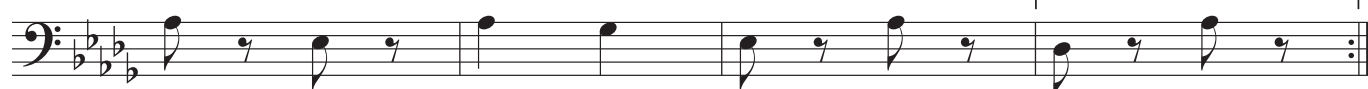


**Fine**

9



13



17



22

